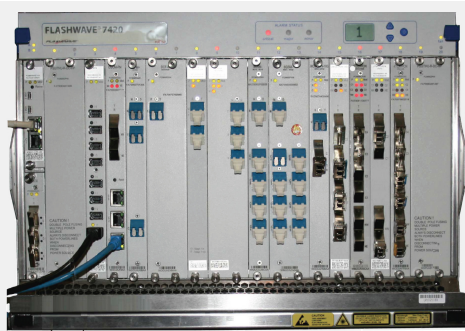


FLASHWAVE 7420 System Turn-Up, Test and Maintenance



Ordering Information

Course Code: 7420-TM

Course Duration: 4 Days

Ordering Numbers:

- In-House : TRIH-7420TM
- Suitcase : TRSC-7420TM*
- MSP Suitcase : TRSE-7420TM*

* For suitcase pricing, contact your Fujitsu Sales Representative or email our Training Coordinator at knowledge.delivery@fnc.fujitsu.com.

Prerequisites

- SONET Tutorial
- DWDM Tutorial
- Recent experience with DWDM equipment

Course Contents

- Overview
- Modules
- System Applications
- Alarms and Conditions
- NE Management
- Provisioning
- Acceptance Testing
- Hands-On Exercises

Course Description

This course covers operations, performance monitoring, interpretation of alarms and condition reports, fault isolation trouble clearing, and upgrades and migrations, as well as an introductory overview of element management software. The course also introduces support resources, such as the Fujitsu Technical Assistance Center (TAC) and Partners Technical Documentation.

Who Should Attend

The course is recommended for central office and field personnel Engineers, NOC personnel and supervisors and managers also benefit from this course.

What you will learn

Overview

- FLASHWAVE 7420 System Description
- FLASHWAVE 7420 System Shelves
 - 7HU Shelf
 - 9HU Shelf
 - SH1HU-HP/2DC Shelf
 - SH1HU-R/PF Shelf
 - 1HU Passive Shelf
 - 1HU Fiber Management Shelf
- Management Software
- Transport Networks
 - Metro Core
 - Metro Access
 - Enterprise
- User Traffic Types
 - SONET
 - Fast Ethernet
 - GbE
 - 10 GbE
 - 100 GbE
- Fiber Connectivity
- Fibre Channel
- Wavelength Plan
 - DWDM
 - CWDM
 - DWDM/CWDM Hybrid
- 32-Channel Banded Architecture
- 40-Channel Unbanded Architecture
- 80-Channel Unbanded Architecture
- Performance Monitoring

Modules

- Power Supply Modules
- Fan Assembly Unit for 7HU Shelf
- Management Modules
 - Network Control Unit
 - Shelf Control Unit
- Optical Supervisory Channel Modules
- Utility Module
- 4-Port Optical Power Control Module
- Common Equipment Module for 9HU Shelf
- FAN/9HU Unit for 9HU Shelf
- ROADM Application Units
 - 2-Degree and 8-Degree ROADM Optical Power Modules
 - 40-Channel Splitter Modules
 - 50 GHz/100 GHz Optical Interleaver/De-Interleaver Module
 - Passive Shelf Control Unit

- Passive Optical Modules
- Dispersion Compensation Modules
- 2-Port Protection Modules
- Optical Amplifiers
- Channel Modules
- Core Channel Modules
- Access Channel Modules
- Enterprise Channel Modules
- Small Form-Factor Pluggable Modules
- Filler Panels

System Applications

- Point-to-Point
- Linear Add/Drop
- Ring
- ROADM

Alarms and Conditions

- Alarms
- Alarm and Condition Reports
- Monitoring Alarms and Events
- Standing Condition Codes
- Transient Condition Codes
- Error Codes

NE Management

- Accessing the FLASHWAVE 7420 NE
- Connecting to an External PC
- FLASHWAVE 7420 Web GUI
- Web GUI Menus
- Web GUI Tabs
- NE Management using TL1
- NETSMART 1500 Management System

Provisioning

- System Turn-Up
- Automatic Provisioning
- Manual Provisioning
- Access Identifiers
- Provisioning Dependencies
- Provisioning the NCU
- Provisioning the OSC

Acceptance Testing

- Loopback Testing
- Facility Loopback on Client/Network Interface
- Terminal Loopback on Client/Network Interface
- Channel Module Client/Network Port Loopback