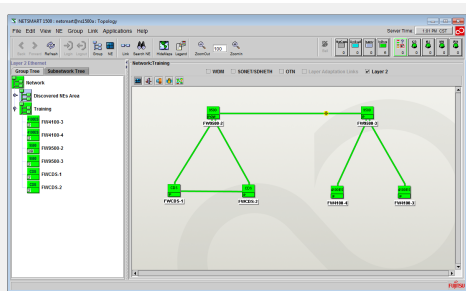


NETSMART 1500 Management System Carrier Ethernet Provisioning



Ordering Information

Course Code: NS1500-CEP

Course Duration: 4 Days

Ordering Numbers:

- In-House: TRIH-NS1500CEP
- Suitcase: TRSC-NS1500CEP*
- MSP Suitcase: TRSE-NS1500CEP*

* For suitcase pricing, contact your Fujitsu Sales Representative or email our Training Coordinator at knowledge.delivery@fnc.fujitsu.com.

Prerequisites

- SONET Tutorial
- DWDM Tutorial
- Ethernet Tutorial

Course Contents

- Overview
 - Network Overview
 - Carrier Ethernet
- System Components
- QoS Templates
- Unprotected Services
- Adding SOAM to a Service
- G.8031 Protection Domains
- Adding Service to a Protection Domain
- Ethernet Tunnels
- Services Across Ethernet Tunnels
- CWDM in Mobile Backhaul Network for FLASHWAVE 7120 NEs
- FOSPORT Protection On a FLASHWAVE 4100 ES NEs

Course Description

This course provides an overview of Carrier Ethernet, with in-depth provisioning examples and practice of typical services deployed on one of the following platforms:

- FLASHWAVE 9500 Packet Optical Networking Platform (ONP) Release 6.1.2
- FLASHWAVE CDS Micro Packet Optical Networking Platform (ONP) Release 6.1
- FLASHWAVE 4100 ES Micro Packet Optical Networking Platform (ONP) Release 9.1

Who Should Attend

The course benefits all personnel responsible for provisioning Ethernet services on the FLASHWAVE equipment listed in the course description, who wish to gain a general understanding of provisioning Carrier Ethernet using the NETSMART 1500 Management System.

What You Will Learn

Overview

- NETSMART 1500 Management System
- Network Overview
 - Ethernet Services Provisioning
 - Ethernet Over SONET Provisioning
- Carrier Ethernet
 - Ethernet Services - EPL, EVPL, EPLAN, EVPLAN, EP Tree, and EVP Tree
 - EVC - UNI, INNI, and ENNI
 - C-Tags and S-Tags
 - LIFs and PORTMODE
 - Service Combinations on FLASHWAVE 9500, FLASHWAVE CDS, and FLASHWAVE 4100 platforms
 - Scheduling and Shaping on FLASHWAVE 9500, FLASHWAVE CDS, and FLASHWAVE 4100 platforms
 - Bandwidth Profiles
 - Policing and Shaping
 - Quality of Service
 - Service OAM
 - SOAM Service Domains, MEGs, MEPs, and MIPs
 - G.8031 Protection

System Components

- Shelf Units
- Line Units
- Fan Units
- SFPs and XFPs

QoS Templates

- Policing and Shaping
- Ingress CoS
- Ingress Bandwidth
- Classful Policing
- Manage QoS Template

Unprotected Services

- Provisioning and Managing Unprotected Services

Adding SOAM to a Service

- SOAM Fault Management
- Adding a MEG
- Adding a MEP
- SOAM Management

G.8031 Protection Domains

- Provisioning and Managing G.8031 Protection Domains
- QoS Templates
- VLAN Tagging
- Near End Syncs With Far End
- Working and Protect Routes

Adding a Service To a Protection Domain

- Provisioning and Managing Services On a Protection Domain
- Creating and Managing LIFs
- QoS Templates
- Creating and Activating EVC/OVC

Ethernet Tunnels

- Provisioning and Managing Ethernet Tunnels
- Point-and-Click Ethernet Tunnel Creation
- Displaying Ethernet Tunnels: Graphical, Tabular, and Topology Views

Services Across Ethernet Tunnels

- Unprotected Ethernet Services
- Point-and-Click EVC/OVC Creation
- Displaying Tunnels
- Selection Routes
- Activation Ethernet Service

CWDM in Mobile Backhaul Networks for FLASHWAVE 7120 NEs

- Cell Site Connectivity
- Provisioning Ethernet Services

FOSPORT Protection On a FLASHWAVE 4100 ES NEs

- Provisioning and Managing FOSPORT Protection