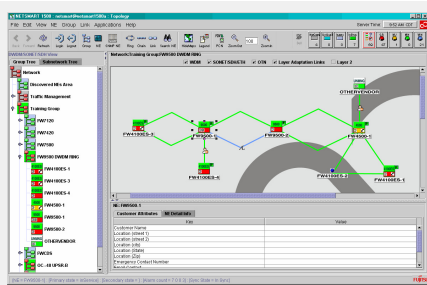


NETSMART 1500 Management System User Operations and Administration



Ordering Information

Course Code: NS1500-UA

Course Duration: 4 Days

Ordering Numbers:

- In-House: TRIH-NS1500UA
- Suitcase: TRSC-NS1500UA*
- MSP Suitcase: TRSE-NS1500UA*

* For suitcase pricing, contact your Fujitsu Sales Representative or email our Training Coordinator at knowledge.delivery@fnc.fujitsu.com.

Prerequisites

Students should first attend training for Fujitsu products they intend to manage with the NETSMART 1500 Management System (for example, FLASHWAVE 4xxx and FLASHWAVE 9500 systems).

Course Contents

NETSMART 1500 Management System Introduction
Topology Management
DataComm and Security Management
NE User Management
TL1 Editor
Configuration Management
Cross-Connect Management
Connection Management
Fault Management
Wavelength Management
Data Services Management
NE Software Management
NE List and Task Management
Log Management
Remote Notification Management
Hands-On Exercises

Course Description

This course trains students as operators to provision, monitor, and perform trouble analysis of Fujitsu NEs in network configurations using the NETSMART 1500 Management System

software. The course also trains students to perform basic administration-level functions within the NETSMART 1500 Management System application.

Who Should Attend

The course benefits Network operators, managers, and those with NOC, NCC, NDC, NPC or TAC responsibility.

Course Outline

NETSMART 1500 Management System Introduction

- Logging On and Off
- Dashboard Window and User Preferences
- Change Password and Lock Screen
- NETSMART 1500 Management System Home Page

Topology Management

- Graphical and Tabular Reports
- TL1 Console
- Find NE, Group or Subnetwork
- NE System Configuration Report
- Display Link Information and Layer 2 Links
- Display Connection Information
- Bandwidth/Capacity Management Reports
- GNE and G-0144 Compliance Reports
- Create and Manage Groups
- Add/Change Background Map for a Group
- Topology Discovery and Add Discovered NEs
- Add a Ring and Resolve Conflict Links
- Add and Remove an NE
- Add and Delete a Link
- Create a Layer 2 Link

DataComm and Security Management

- Administration Management
- DataComm Management
- NETSMART Security Management
- Domain Management Functions and Reports

NE User Management

- Create Security Area and Managing User Accounts
- NE User Management Log

TL1 Editor

- Command and Batch Mode Operations
- ACL Management Operations

Configuration Management

- Graphical and Tabular View
- Capacity Management and System Equipment Reports

- Fault Management
- Operations Dialog Boxes
- Environmental Alarms and Controls
- PM View
- BLSR Management

Cross-Connect Management

- Add/Delete SONET, OUPSR, and DWDM Cross-Connects
- Display the Current Path Selected
- Set Cross-Connect Names

Connection Management

- Features and Reports
- Show Active Path and Protection Switch
- Connection Wizard
 - Advanced Automatic Creation
 - Manual Creation

Fault Management

- System Fault and Alarms and Conditions Report
- Affected Connections and Link Fault Reports
- Fault History and Transient Event Logs

Wavelength Management

- Graphical and Tabular Views
- Optical Power End-to-End Monitoring

Data Services Management

- LIF and Layer 2 Link Management
- QoS Template and EVC/OVC Management
- Protection Domain Browser
- Command Line Interface

NE Software Management

- Software Repository Management
- NE Software Management
- Remote Memory Backup
- Firmware Upgrade Operations

NE List and Task Management

- NE List Management
- Task Management
 - Create a New Task
 - Set and Select Schedule Preferences

Log Management

- Activity, System, Fault History, Transient, and TL1 Logs

Remote Notification Management

- Add Remote Notification User
- Create Associations and Add Schedule